



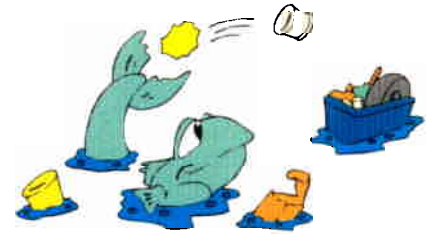
Centre County Recycles

Centre County Solid Waste Authority • 253 Transfer Road • Bellefonte • PA • 16823
CCSWA (814) 238-7005 • Recycling Hot Line (814) 238-6649 or 1-800-605-6649
e-mail: Wasted5@uplink.net website: www.ccswa.centre.pa.us
To Report Illegal Dumping Call 1-800-605-6649 or (814) 238-7005

Volume 9, Issue 2

Spring 2000

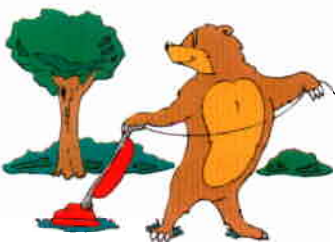
Spring Clean-up for Area Watersheds Set for April 29th



The Spring Creek Watershed Community's annual cleanup of the watershed and neighboring areas, will take place from 9:00AM to noon, Saturday April 29th, rain or shine. This will mark the fourth year that friends and neighbors of Spring Creek have gathered together to make a community-wide effort to preserving their natural resource. This project will involve hundreds of people throughout the watershed and generate tons of trash and debris. The cleanup will be conducted simultaneously on roads, hillsides, stream banks, sinkholes, and key locations within the watershed. It coincides with Centre Region Parks and Recreation Authority's cleanup of regional parks (Spruce-Up Spring Creek), PennDOT's cleanup of roadsides by the Adopt-a-Highway crews, and Mount Nittany Conservancy's cleanup on that same date.

The organizing committee also invites the residents of the bordering watersheds – such as Spruce Creek, Sinking Creek, Elk Creek, Penns Creek, Bald Eagle Creek and Little Fishing Creek to participate and simultaneously clean up their watersheds. The massive cleanup by the Spring Creek Watershed Community will be assisted by area businesses, industry, environmental organizations, Penn State University, and hundreds of volunteers that live or work in the 144 square mile watershed. Last year 180 volunteers participated and removed 18 tons of “junk” from the watershed. This year the goal of the Watershed Community is to recruit more volunteers and to remove 25 tons of “junk” watershed-wide. The volunteers will work at specific sites and municipalities to be named later. (Call the ClearWater office @ 237-0400 to find out where.) The Spring Creek Watershed Community invites residents of the Spring Creek watershed to report any problem areas by phoning in the exact locations to the ClearWater Conservancy office at 237-0400. PennDOT will provide vests, gloves, and trash bags.

For the fourth consecutive year the Moshannon group of the Sierra Club will also be participating in the Spring Creek cleanup in a unique way – by canoe. Volunteers will retrieve trash in the creek bed and debris along the stream that may not be accessible to more terrestrial volunteers. As in past years, Tussey Mountain Outfitters of Bellefonte, will donate canoes, paddles, and life jackets for this event. The specific section of Spring Creek to be canoe-cleaned will be dependent on the water level and the group. Interested participants who have at least a basic experience with canoes should contact Dave Coleman at 234-0839. The following day, Sunday April 30, the Moshannon Group of the Sierra Club will be conducting a tree planting along a Spring Creek watershed riparian zone. Contact Dave Coleman for more details.



The planning committee for the cleanup event will be meeting regularly at 4:00PM on Mondays at the ClearWater Office until April 29th. Individuals and organizations interested in participating in the cleanup are requested to call Beth Thoma, Watershed Coordinator, at 237-0400, or e-mail at bthoma_99@yahoo.com.

Stop Illegal Dumping In Centre County

Illegal dumping occurs in numerous ways throughout Centre County. The primary reason most people illegally dump their trash is to avoid the costs of proper disposal. Illegal dumping can be anything from littering (throwing an empty can out your vehicle window), dumping household trash in rural areas or construction waste in old strip mines, placing your household garbage in your employer's dumpster and even placing your trash in your neighbor's driveway on his pickup day. Whether you destroy the beauty of our environment or have someone else unknowingly pay for your costs of trash disposal, it's still illegal dumping.

In 1991, the Centre County Commissioners adopted a county-wide ordinance to help prevent illegal dumping. Although the cost of disposing of a month's worth of household trash may be less than ten dollars, illegal disposal can cost up to \$1,000 per incident or in some instances, jail time. It's simply not worth it. To enforce the County ordinance, the Authority employs a full time enforcement officer and has various surveillance equipment which is used to catch and prosecute individuals who violate the ordinance. Fines collected from successful prosecutions are used to support clean-up days held throughout the County. Whether it's Spring Creek,



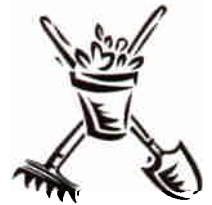
Sinking Creek or the Munson Dump, the Authority has targeted money, manpower and equipment to try and clean frequently used dump sites. Many of our cases begin with complaints/tips received from county residents. If you witness illegal dumping, you can contact our enforcement officer by calling 238-7005. All information received can be kept confidential.

Local Nursery Does Its Part

Fox Hill Gardens, a local nursery located at 1035 Fox Hill Road, (midway between Beaver Stadium and the University Park Airport) is accepting used plant containers for recycling. Residents may return black plastic nursery pots one gallon (6" diameter) or larger.

The public is welcome to tour Fox Hill Gardens' extensive display gardens to see the wide selection of trees, shrubs, perennials and annuals when depositing nursery pots. Businesses should call before bringing pots for recycling.

Residents may drop off the pots any time from March 15 through Thanksgiving, M-SAT, 8:30 a.m.-5:30 p.m. From December 1 until March 15, please call before coming. Sorry, no greenhouse pots, 4" sq. or cell packs, annual flats, hanging baskets or broken pots.



Questions? Call 237-9087

CENTRE COUNTY SOLID WASTE AUTHORITY

Chairman	Charles L. Frazier
Vice Chairman	Frederick J. Gustkey Jr.
Secretary	Aileen Homan
Treasurer	John H. Auman
Board Member	Dean Neale
Board Member	Robert F. Custard
Board Member	Tom Bowes
Executive Director	Ted W. Onufrak
Operations Manager	Daniel R. Dixon
Recycling Coordinator	Joanne Shafer
Enforcement Officer	Andrew S. Hughes
Office Manager	Robert L. Brown, Jr.
Newsletter Editor	Karen Moore

Centre County Recycles is a quarterly newsletter published for Centre County residents as a source of information regarding recycling and environmental issues. Centre County Recycles is printed on recycled and recyclable paper with soybean based inks. If you have any comments or would like to make a suggestion, please call 238-6649 or e-mail us at Wasted5@uplink.net. Offset Printing by Print-It Plus.

Home Composting & Grasscycling

First Step in Reducing Yard Waste: Don't Make It!

Home composting and grasscycling eliminate yard waste before you make it. There is no sense carting grass to the curb-side for the trash man when you can easily let it lay on the lawn. Certain municipalities have wonderful composting programs for their residents, but this service is not available in all municipalities. Home composting and grasscycling enable homeowners to recycle valuable nutrients and organic material without any costly collection or processing by the municipality.



What is Grasscycling?

Grasscycling refers to the practice of letting your clippings lay on the lawn after mowing. Though simple in its fundamental principles, effective grasscycling means that one must change a few lawn care habits.

- Cut your grass higher than usual. This also discourages broadleaf weeds that thrive in closely mowed lawns.
- Try not to mow more than a third of the height of your grass. If you don't mow often enough, the clippings will need to be raked, even with mulching mowers.
- Remember that overuse of chemical fertilizer causes excessive top-growth and makes grasscycling more difficult.



Composting at Home: Good for Your Yard, Garden, and Planet

Beyond its waste reduction benefits, composting produces rich organic humus for use in your yard or garden. Composting in your own backyard need not be expensive or difficult. While many attractive (and sometimes expensive) composting containers are available, reused pallets, wire mesh, or concrete blocks offer inexpensive alternatives. Simply mix your yard waste in an appropriate bin and follow the hints below. We have more details on composting units and how to successfully compost in our office. Please visit our web site at www.ccswa.centre.pa.us or call us for a free brochure at 238-6649.

Top 10 Reasons for Grasscycling

10. It saves time since you rake less.
9. It reduces landfilled waste.
8. It fertilizes your lawn naturally.
7. It discourages broadleaf weeds without toxic weed killers.
6. It allows more time to sit on the porch.
5. It saves plastic bags used for clippings.
4. It reduces the need for chemical fertilizers.
3. It reduces wear and tear on your rake.
2. It's the environmentally sensible way to mow your lawn.
1. It makes Centre County's recycling and waste reduction efforts even more outstanding.

Home Composting Made Easy

Compost a combination of green (rich in nitrogen) and brown (high in carbon) yard waste.

Keep your pile moist but not soggy.

If you compost kitchen scraps, don't try to compost meat, or other dairy products.

Don't put pet wastes in your pile. They contain disease-causing organisms.

Remember that smaller sized particles compost faster. Chop up your leaves with your mower and rent a chipper for woody wastes.

Turn, mix, or aerate your pile to speed up the composting process.



Guide to Curbside Recycling

Bulk Waste Collection in Centre Region

GLASS • rinse • remove lids, discard • labels may remain	YES	Clear, green and brown bottles and jars
	NO	Drinking glasses, window glass, ceramics, light bulbs, dishes, mirrors
CANS & FOIL • rinse • remove lids, place inside can • label may remain	YES	Aluminum, steel and tin food and beverage cans, EMPTY aerosol cans, EMPTY paint cans, TV dinner trays, disposable pie pans, aluminum foil
	NO	Scrap metals, pots, pans, siding, chair legs
PLASTICS • rinse • remove caps • flatten	YES	#1 PET or PETE bottles #2 HDPE bottles
	NO	Cottage cheese, margarine or yogurt containers, plastic cups, toys
NEWSPAPERS PHONE BOOKS • stack in a paper grocery bag or tie with string	YES	Clean, dry newspaper, including inserts, phone books
	NO	Wet or yellowed newspaper, cereal boxes; do not mix with magazines or office paper
MAGAZINES CATALOGS • bundle securely with string or twine	YES	Magazines, catalogs, glossy paper
	NO	Books of any kind; do not mix with newspapers or office paper
MIXED OFFICE PAPER • place in a separate paper bag, remove paperclips and tape	YES	Lined and unlined papers: writing, colored bond, typing or copy, computer paper and envelopes. Keep separate from Newspapers and Magazines.
	NO	NCR paper or blue prints
CORRUGATED CARDBOARD • break down boxes • place in a separate paper bag or bundle	YES	Clean, dry, corrugated cardboard
	NO	Cereal boxes, waxed, oily or wet cardboard, plastic inserts, pizza boxes or Styrofoam® peanuts

Residential properties in College, Ferguson, Harris, and Patton Townships who receive trash collection services through the municipal contract with USA Waste of PA are advised that Bulk Waste Collection is scheduled for the week of May 15 through May 19. Customers may place large bulky items at the curb on their regular pickup day during this special collection week. Items included are: furniture, mattresses and box springs, old appliances and tires (limit 10 passenger size without rims).

Special Reminders:

- Salvagers will frequent the area through the week.
- No loose piles of debris will be collected.
- Items within 5 feet of the trash pile will be considered trash, so remove garden equipment and toys that you do not intend to throw away.
- Consider recycling some of your unwanted household items by contacting charitable organizations in our area such as: Interfaith Mission 234-7731, CentrePeace Inc. 353-9081, or St. Vincent DePaul Society 867-3131.

Remember: If It Is Not Properly Prepared, It Is Still Trash

This publication is partially funded by an Act 101 Recycling Grant through the Pennsylvania Department of Environmental Protection.

Tom Ridge, Governor
Commonwealth of
Pennsylvania



www.dep.state.pa.us

James Seif, Secretary
Department of Environmental
Protection

If you have questions about this collection service, call USA Waste of PA at 235-1901. If you do not live in any of the municipalities listed, please contact your trash hauler or your municipality to see if this service is available in your area.