

September 8, 2015

Mr. Terry Harrison
City Administrator
City of Pulaski
P.O. Box 633
Pulaski, TN 38478-0633

Dear Terry:

Recently you asked MTAS' opinion on use of 'deduct meters' in the city's water system. Specifically, you asked about hose bibb meters. As in other cities, the City of Pulaski's sewerage billing is based on metered water sales. I understand that the city received a request to deduct from the water/sewer utility bill water usage that is not returned to the city's sewerage system. This could occur when water is used to fill a swimming pool, for livestock watering, for irrigation and landscaping.

Many cities' utility policies allow infrequent (usually one time per year) adjustments of the sewer portion of the utility bill for filling of swimming pools and concealed water leaks upon evidence of repair and a plumber's affidavit. I believe the City of Pulaski has a similar policy.

If I understand the current request correctly, the user is petitioning to be allowed to use a water hose bibb meter to register water usage for outdoor watering, car washing, etc., and deduct that amount of usage from his/her sewer bill.

First, water used but not returned to the sewer system is a common occurrence. For the average homeowner in Tennessee's climate, the quantity of such water usage is generally not a large portion of the water/sewer bill. But, for landscape businesses, golf courses and residential users who use large quantities of water for landscaping purposes, then deduct meters make sense. Several water systems, including Harpeth Valley Utility District, Smyrna, Signal Mountain, Knoxville and Metro Nashville allow use of separate meters for irrigation purposes.

I want to emphasize that separate irrigation meters are usually fixed meters of the quality, caliber and subject to the same installation requirements as the utility's common use water meter. Another name for deduct meter is 'secondary water meter'. Knoxville Utility Board (KUB) describes a secondary water meter as "a device that measures water outside the home separately from the water used inside the home..." (see attachment). In some systems, secondary meters are owned, installed and maintained by the water utility. In others, such as the KUB system, the secondary meter is owned, installed and maintained by the user. But the KUB meter reader reads the secondary meter. There is a usage charge and a minimum monthly charge for the secondary meter regardless of usage.

Mr. Terry Harrison
Page 2
September 8, 2015

The City of Pulaski's current code of ordinances Title 18-110 states "All meters shall be installed, tested, repaired and removed by the municipality." A couple of studies I researched showed that it takes three or more years for heavy outside residential water users to realize enough savings in their utility bills to break-even on the cost of the deduct or secondary meter. Low to moderate outside water users would require longer to break-even on cost savings.

Another type of deduct or secondary water meter – the one you asked about - screws on a hose bibb (see attachment). Hose bibb water meters are in the price range of \$100. From my research, few municipal water systems allow hose bibb meters. Concerns range from accuracy and reliability to backflow prevention issues. Some systems require a reduced pressure zone backflow prevention device on any water line which services an irrigation system or a swimming pool.

It would be well to keep in mind that the city's sewer system is run for the benefit of all present and future customers. Generally, the customer pays for wastewater service on the basis of flows which passes through the customer's water meter. When a customer does not pay on the basis of all water metered, the cost of such wastewater service must be recovered from other customers.

Therefore, the city will need to decide (1) whether to allow deduct or secondary meters; (2) if so, criteria, application procedures, fees and charges; (3) ownership of the meter; and (4) types of deduct meters allowed. If the city decides to allow deduct meters, then MTAS recommends fixed meters of the same type currently in use and not hose bibb meters.

I'd be happy to do more research on deduct meters if the city requests and desires to pursue this matter.

Sincerely,



Sharon Rollins, P.E.
Technical Consultants Program Manager

Attachments

KUB Irrigation/ Water Only Meter

Another option available to assist in reducing wastewater charges is a KUB Irrigation/Water Only Meter, which is primarily used by commercial customers. Below are some frequently asked questions about this type of meter.

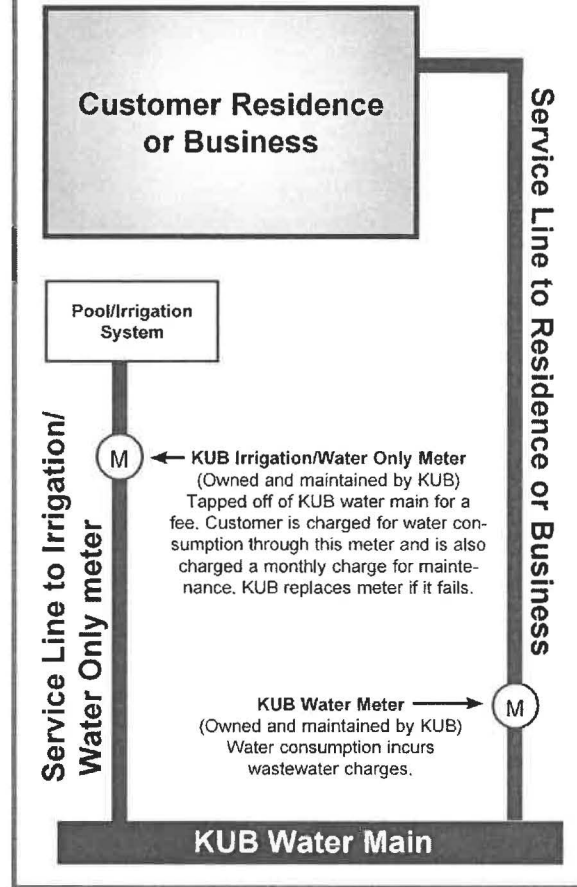
What is the difference between a secondary water meter and a KUB irrigation/water only meter?

A KUB irrigation/water only meter is tapped off the KUB water main and is owned by KUB. If it fails, KUB will replace the meter at no charge. Due to the fact that it is maintained by KUB, an irrigation/water only meter is subject to a monthly customer charge. The amount of this monthly charge, which will include the charge for water used, will depend on the size of the irrigation/water only meter that is installed.

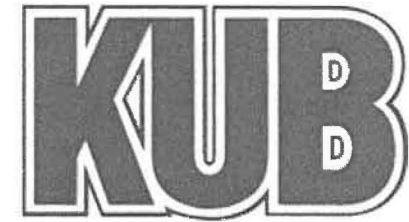
Why would I want a KUB irrigation/water only meter?

A customer who has low water pressure in his/her home may choose a KUB irrigation/water only meter if the use of an irrigation system further reduces water pressure to the home.

Typical Residential KUB Irrigation/ Water Only Meter Installation



P.O. Box 59017
Knoxville, TN 37950-9017
865-524-2911
www.kub.org
wastewater@kub.org



Secondary Water Meters

An option to reduce
wastewater bills

Which option is right for me?

Before deciding to buy or install a secondary water meter, call KUB's Customer Service representatives (524-2911) for information about KUB's water programs that could possibly meet your needs:

- Pool Credit
- Summer Watering Credit Program
- Secondary Water Meter
- Irrigation Meter

What is a secondary water meter?

A secondary water meter is a device that measures water used outside the home separately from the water used inside the home, which goes directly into the wastewater system. Most secondary water meters are used to measure water usage for lawn irrigation systems and swimming pools, where the water used is not returned to the wastewater system.

What size and type of secondary water meter do I need?

A secondary water meter that measures usage by the cubic foot is required. Your irrigation company or plumber can determine the size of the secondary water meter best suited for your uses.

Can I purchase a secondary water meter through KUB?

Yes. KUB sells 5/8-inch secondary water meters to contractors and the public. Call 524-2911 for more purchasing details.

What else will I need to purchase?

You will need a meter well and applicable fittings, which can be purchased at plumbing supply stores. Depending on the application, you may need a backflow prevention device. If your secondary water meter is for an irrigation system, you must install a backflow prevention device, which may be purchased at plumbing supply stores and must be inspected annually. Call 524-2911 for more details.

Who owns the secondary water meter?

You, the customer, own the secondary water meter. You are responsible for maintaining and replacing it if it breaks.

Where is a secondary water meter installed?

A secondary water meter:

- Must be installed downstream of the KUB primary meter
- Must be permanently fixed (hard-plumbed) and installed inside a meter well
- Cannot be installed on a spigot or hose bib
- Must be installed so that it is easily accessible for KUB meter readers

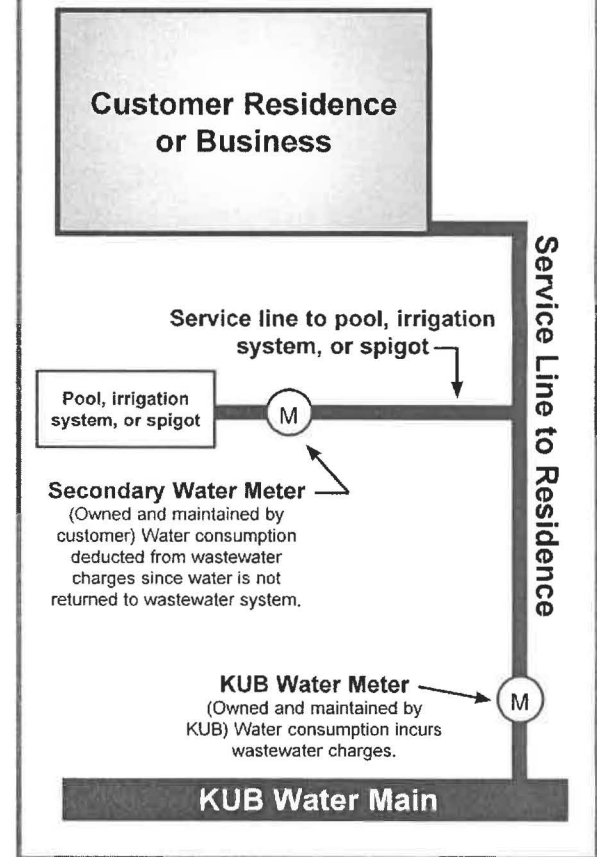
Who installs the secondary water meter?

It is the customer's or contractor's responsibility to install the secondary water meter. KUB does not advise on installations or provide plumber referrals.

What do I do after the secondary water meter installation is complete?

KUB must inspect all secondary water meter installations. After installation is complete, the owner must contact a KUB Customer Service representative at 524-2911 to request an inspection. Once the meter has passed inspection, a KUB representative will register the reading on the meter. Any usage registered prior to the KUB approved inspection will not be deducted from your wastewater charges.

Typical Residential Secondary Water Meter Installation



How am I billed?

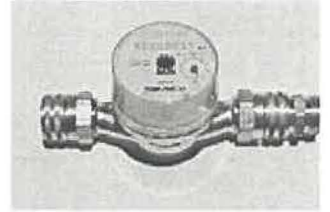
Water consumption through your KUB primary water meter and secondary water meter will appear on your monthly bill. Water consumed through the secondary water meter will be deducted from the bill for purposes of determining wastewater charges. No wastewater charges will be incurred for water consumed through the secondary water meter, and because the meter is owned and maintained by the customer, there is no additional monthly charge for a secondary water meter.

For more information, call 524-2911 or visit KUB's Web site at www.kub.org.

Hose Bibb (Sill Cock) Water Meter With Garden Hose Thread Inlet & Outlet

This meter fits directly on to the sill cock (lawn faucet) with a swivel adaptor

This meter fits directly on to the sill cock (lawn faucet) with a swivel adaptor. The outlet of the meter is 3/4" Male Hose Thread, the hose is screwed directly on to it. At this time we are the only water meter supplier offering this product.



We developed this product in response to requests for garden hose meters for monitoring usage in the garden, for deduct meters for sewer billing reduction, for conservation projects to indicate washing machine or other appliance water usage. It is also available with a 24" flexible high pressure hose in the inlet side.

It is a low cost item that will pay for itself in a very short time in money saved due to water conservation and reduced sewer billing charges. This meter features an easy-to-read odometer type reading in single gallons, an additional rotary dial with a sweep hand reading in 1/10 of a gallon and a trickle indicator showing if there is any usage at all to detect leaks. Total registration on the meter is up to 9.999 million gallons. The meter is quality constructed of waterworks bronze according to strict ISO 4064 standards for accuracy, quality and length of service life. It is also available in a hot water model up to 194 degrees F and with a contact microswitch on the register for remote registration, data acquisition, or to interface with a pc. If you prefer with 1/2" MIPT meter couplings, they are available as well.

Daniel L. Jerman Co., 275 Railroad Place, Hackensack, NJ 07601. Tel: 800-654-3733; Fax: 201-487-3953.



Building Department
City of Westerville
t. 614.901.6650
f. 614.901.6666

64 East Walnut Street Westerville, Ohio 43081 | P. O. Box 6107 Westerville, Ohio 43086

Procedures For Residential Deduct Meter

Complete the deduct meter application. Payment for the deduct meter, remote, and permit will be collected when application is submitted.

To obtain your new deduct meter, take a copy of your paid receipt to the Water Department located at 312 W. Main Street and the meter will be issued to you.

Installation

The deduct meter shall be installed in a horizontal position above the main water meter (not to exceed five feet above the finished floor). A separate full closing shut off valve shall be installed before the deduct meter. The meter and all water lines shall be properly secured and supported with standoffs to eliminate movement. Note: In special circumstances, it may not be possible to locate the deduct meter just above the existing main water meter. In such cases, ask to speak with an inspector to determine an alternative location.

Backflow Protection

If the deduct meter is for supplying water to only hose bibs/sill cocks. The hose bibs/sill cocks shall be the atmospheric type. If they are not, then ASSE 1011 backflow adaptors can be screwed onto the existing hose bibs/sill cocks. Note: ASSE 1011 adaptors can be purchased at most Home Depot, Lowes, and hardware stores.

If the deduct meter is for supplying a lawn irrigation system, then an ASSE 1013 reduced pressure principle backflow device or ASSE 1020 pressure vacuum backflow device shall be installed. The backflow devices shall be installed at least 12 inches above the highest sprinkler head. Unions shall be installed on either side of the backflow device. Secure the backflow device with stand off's to the house wall.

The backflow devices shall be pressure tested by a plumber who is State Certified in backflow devices. The plumber shall submit the test results in writing (backflow form) to the City of Westerville Water Department (fax 614-901-6773) prior to scheduled inspection date.

Schedule The Inspection

Once the deduct meter is installed, the contractor must contact the Westerville Building Department at (614) 901-6650 to schedule an inspection. Once the installation has been approved, the deduct meter will then be in service and water registered on this meter will be deducted from your sewer bill.

Note: For the next day's inspection, please call before 12:00pm.

1/6/2014

Water Meters

Water Billing

The City of Verona allows a 2nd water meter to be installed for outside water usage. This installation is permanent, and once installed, cannot be removed. The water usage is billed on a quarterly basis, and is at a reduced rate. For more information about water rates, visit our Public Works Department page or call 608-845-6695.

Obtaining & Installing Water Meters

The procedure for you or your plumber to obtain and install water meters includes the following steps:

- Obtain a Plumbing Permit from the Building Department
- Obtains meter(s) from the Verona Public Works Office and install
- Contact the Building Department for inspection immediately after the meter is installed
- Inspector notifies the Water Department, which installs an electronic transponder on the meter, and activates the account

Building Access

Remember, both the Inspector and the Water Technician need access inside the building. We make every attempt to inspect and activate meters within 48 hours of notification.

Installation Specifications

- Meters shall be installed in a face up, horizontal position
- Secondary meters shall be installed in parallel with the primary meter
- Only outside hose bibs are allowed on the downstream side of the secondary meter
- The primary and secondary meters shall be a minimum of 12 inches apart for installation and service



City of Manchester, NH Official Web Site



MANCHESTER, NH
New Hampshire's Business Capital

MENU

[Home](#) » [Departments](#) » [Environmental Protection](#) » [Deduct Meter Program](#)

Environmental Protection Division Menu

Deduct Meter Program



Many times citizens of Manchester will use the water obtained from the Manchester Water Works to fill their pools, wash their cars, and water their lawns and gardens. This water typically does not enter the City sewer system for subsequent treatment at the City's Wastewater Treatment Facility.

Because Manchester sewer bills are based on water usage, the deduct meter program was established to provide a credit for water that does not enter the sewer system. This program is available to all property owners, however, for non-residential commercial/industrial properties, the program is limited to lawn irrigation usage.

This separate deduct meter is purchased by the property owner at his/her own expense to measure outside water usage. The meter reading consumption from the deduct meter is then deducted from the Manchester Water Works meter reading consumption, to determine the Sewer Usage Charge.

For additional information, please access the links below:

[Deduct Meter Rules And Regulations](#)

[Sample Application](#)

Warranty Information

The City of Manchester, Environmental Protection Division (EPD) and the Manchester Waterworks (MWW), as part of the Combined Billing Initiative, has made changes to the Deduct Meter Program.

Effective June 1st all Deduct Meters Responsibilities will be attained by MWW:

- Purchases of meters and horns.
- Scheduled Inspections.
- Scheduled Installations of new radio readers

To purchase a meter Manchester residents must go to MWW Business Office.

Located at MWW Business Office
281 Lincoln Street
Manchester, NH 03103

MWW office Hours
Monday-Friday
8:00 AM to 4:30 pm

To schedule a deduct inspection Manchester residents can call (603) 624-6494.

EPD apologizes for any inconvenience this may cause.

Visiting

[About Manchester](#)
[Arts & Entertainment](#)
[Events](#)
[Recreation & Sports](#)
[Shopping & Dining](#)

Services

[Bid Opportunities & Results](#)
[Licenses & Permits](#)
[Online Payments](#)
[Report a Problem](#)
[Trash & Recycling](#)

Government

[Agendas & Minutes](#)
[Boards & Commissions](#)
[City Directory](#)
[Elections](#)
[Meetings](#)

City Programs

[Adopt-A-Site](#)
[Energy Management](#)
[Manchester Housing Initiatives](#)
[Neighborhood Improvement](#)
[Single Stream Recycling](#)

City of Manchester

Residential Deduct Meter Rules & Regulations

As per Title V Chapter 52, Section 52.160(D) of the Code of Ordinances, user charge credits for residential customers for extraneous water use are available by making application to the Highway Department, EPD, 300 Winston Street for the installation of a "deduct" meter. Extraneous water use is that portion of the Manchester Water Works metered water, not returning to the sewer system. As per Section 52.160(D)(3), credits for non-residential users will be given for water used for irrigation purposes only. Said readings will then be deducted from the Water Works meter reading to determine the Sewer Usage Charge, in accordance with Section 52.160(A)(2).

The following are conditions of approval:

1. Property owner must complete an EPD application. **Deduct meters may only be purchased from EPD.**
2. Property owner must obtain a **plumbing permit** from the Building Department prior to installation of meter.
3. The property owner must have the deduct meter and piping modifications installed in accordance with all applicable codes and EPD's installation sketch. This includes the wire from the meter to the outside recording unit, which must be **phone cable with 24 gauge four (4) conductor wire** (black, green, red, and yellow). Yellow will be used as a spare. **The wire must exit the house no more than an inch or two of the existing Water Works recording unit, or preferably utilizing the same opening used by the existing Water Works recording unit.**
4. When installation is complete, you must call EPD at **624-6513** to schedule the deduct installation inspection. Also, at that time call the Manchester Water Works Meter Department at **624-6516 Ext. 321** to schedule an appointment to have your radio unit installed and/or programmed for the deduct meter. **Meter deduct credit will not begin until BOTH department representatives have satisfactorily completed their inspection /programming.**
5. **NOTE: THE ABOVE INSPECTION DOES NOT ENSURE THE QUALITY OF THE METER INSTALLATION; EPD only verifies that the meter is measuring the water passage correctly.**
6. At the time of inspection, the application form must be complete, including a sketch of the installation and certification by a **licensed plumber** that only water that does not enter the sewer system is connected to the deduct meter.
7. Only one deduct meter per primary water meter is allowed.
8. Abuse of the deduct meter option or attempts to defraud will cause the privilege to be revoked and penalties will be processed in accordance with applicable City Ordinances.

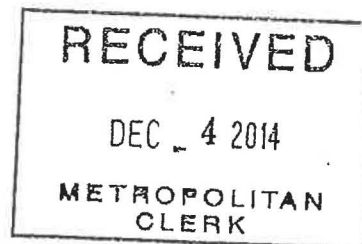
Commercial Deduct Meter Rules & Regulations

A commercial business building owner or lessee may make application to the Department of Highways – EPD at 300 Winston Street to install a separate meter to measure only the irrigation water uses from a commercial establishment. The deduct meter reading will then be deducted from the Water Works meter reading to determine the Sewer Use Charge, in accordance with Chapter 52, Section 52.160 (D) 3 of the City Code.

The following are conditions of approval:

1. The building owner, lessee (with owner's written approval on appropriate letterhead), or authorized representative (copy of owner's power of attorney to be provided) must complete an EPD application. **Deduct meters may only be purchased from EPD.**
2. A **plumbing permit** must be obtained from the Building Department prior to installation of meter.
3. The deduct meter and piping modifications must be installed in accordance with all applicable codes and EPD's installation sketch. This includes the wire from the meter to the outside recording unit, which must be **phone cable with 24 gauge four (4) conductor wire** (black, green, red, and yellow). Yellow will be used as a spare. **The wire must exit the house no more than an inch or two of the existing Water Works recording unit, or preferably utilizing the same opening used by the existing Water Works recording unit.**
4. When installation is complete, you must call EPD at **624-6513** to schedule the deduct installation inspection. Also, at that time call the Manchester Water Works Meter Department at **624-6516 Ext. 321** to schedule an appointment to have your radio unit installed and/or programmed for the deduct meter. **Meter deduct credit will not begin until BOTH department representatives have satisfactorily completed their inspection/programming.**
5. **NOTE: THE ABOVE INSPECTION DOES NOT ENSURE THE QUALITY OF THE METER INSTALLATION; EPD only verifies that the meter is measuring the water passage correctly.**
6. At the time of inspection, the application form must be complete, including a sketch of the installation and certification by a **licensed plumber** that only water for irrigation purposes passes through the meter and that none of this water enters the sewer system.
7. Deduct meters up to two (2") inches in size will be available for purchase in the EPD office located at 300 Winston Street. EPD only carries meter horns for deduct meters up to one (1") inch in size. Owner/Lessee is responsible for obtaining horns larger than one inch in size.
8. Only one deduct meter per primary water meter is allowed.
9. Abuse of the deduct meter option or attempts to defraud will cause the privilege to be revoked and penalties will be processed in accordance with applicable City Ordinances.

CSC20143
DEDUCT METER POLICY



BASIS OF CONSIDERATION:

Customers may install a separate meter to measure water that is not returning to the sewer. These meters typically measure irrigation, cooling tower use, or process water use. They may be installed on the domestic water connection line and must be approved by the MWS Permits section. The size of the deduct meter must be smaller than the size domestic meter.

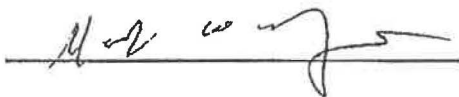
POLICY:

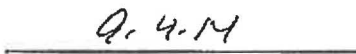
Metro Water Services will permit consumers to install deduct meters for the purpose of measuring water that does not return to the sewer. The deduct meters are the responsibility of the consumer and must be maintained by same. The deduct meter must meet MWS specifications and will be required to be read via our electronic equipment. There shall not be more than one deduct meter per domestic meter.

When deduct meters have been found to be registering consumption that exceeds domestic usage, the deduct meter consumption will be estimated based on a percentage from same time last year. If the consumption on the deduct meter exceeds the domestic meter for a second consecutive month, no credit, current or retroactive, will be issued until the meter has been repaired and is in working condition. Once the deduct meter has been repaired, credit will be resumed, however no retroactive credits will be given.

Recommended by:

Date:

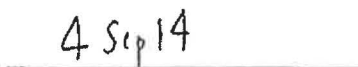
A handwritten signature in black ink, appearing to be "M. W. ...", written over a horizontal line.

A handwritten date "9. 4. 14" written over a horizontal line.

Approved by:

Date:

A handwritten signature in black ink, appearing to be "J. A.", written over a horizontal line.

A handwritten date "4 Sep 14" written over a horizontal line.

[Our Government](#)[Township Services](#)[Living Here](#)[Doing Business](#)[Self Service](#)[Cranberry Connect](#)

CRANBERRY TOWNSHIP PENNSYLVANIA built for you.


[Township Weather](#)

[Brush Creek Treatment Plant](#)
[Annual Flushing Schedule](#)
[Is my water meter the right size?](#)
[Deduct Meter](#)

[Parks & Recreation](#)
[Cranberry Highlands Golf Course](#)
[News & Alerts](#)


You are here: [Home](#) > [Township Services](#) > [Sewer & Water](#) > [Water System](#) > [Deduct Meter](#)

Save on your water bill with a deduct meter

Deduct Meter Options

A deduct meter enables customers to realize a savings for water that does not enter the sanitary sewage system. Examples of water that does not enter the system: lawn sprinkler systems, swimming pools, washing vehicles.

Deduct meters can be used by residential and business customers. The savings appears on the sewage portion of the monthly Sewer & Water bill. [Deduct Meter Request](#)

Is a deduct meter right for me?

A typical home uses 30,000 gallons per year for outside watering. A customer that uses 30,000 gallons for outside watering would realize a savings of \$214.80 (30 thousand X \$7.16) yearly. \$7.16 is the sewage rate per 1,000 gallons.

By dividing \$576.00 by \$214.80, it will take less than 3 years to realize a savings beyond the investment. Individual water usage varies, so the realized savings will also differ.

Deduct Meter 5/8" X 3/4 Costs: \$376.00
Estimated Plumbing Costs: \$200.00

Estimated Total: \$576.00

Customer Resources Contact our Customer Service Center 724-776-4806, with questions.

Pricing, requesting a meter, and meter drawings

- [Deduct Meter Request](#)
- [Deduct Meter Residential Drawing](#)
- [Deduct Meter Non-Residential Drawing](#)

Sprinkler System Drawings

- [Deduct Meter Non-Residential](#)
- [Deduct Meter Sprinkler Residential](#)

Deduct Meter Installation Guidelines

- The installation site of the deduct meter must be within 3 feet of the existing domestic water meter spread.
- Only the outside hose bibs (faucets) and lawn sprinkler systems can be connected to the deduct meter. (nothing internal)
- Cranberry Township will install the deduct meter and the remote reader. Under normal installations (i.e. unfinished basements or open areas) the Township will install the wire for the remote reader.
- If the deduct meter is to be installed in a finished basement, in a closet or boxed-in area, it is the responsibility of the customer to run the remote wire from the deduct meter spread to the remote reader location on the outside of the structure.
- The remote wire will be furnished by the Township and must be in-place before a deduct meter will be installed.
- The deduct meter remote location must be within one foot of the existing remote reader location.
- If the remote wire exits the structure below ground level, a conduit must be installed (including pull-string) starting inside the structure and extending one foot above the finished grade.
- If the deduct meter is plumbed to a lawn sprinkler system, a reduced pressure zone backflow prevention device is required.
- A backflow device is supplied and installed by customer.
- The deduct meter cannot be installed more than 5 feet from floor, without prior approval from the Township.
- All installations of backflow prevention devices must be tested after installation.

Deduct Meter Testing Forms

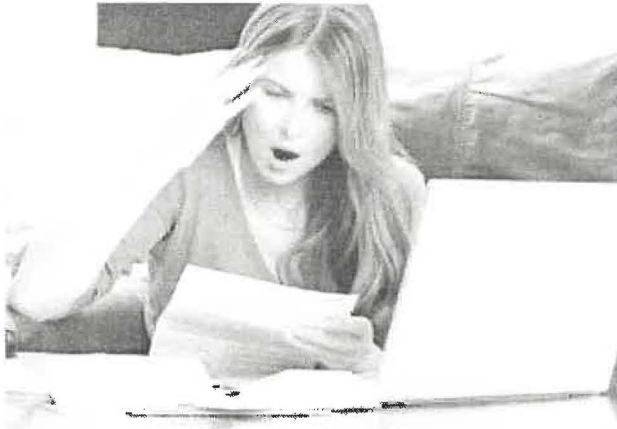
- [Backflow Prevention Tester](#)
- [Test and Maintenance Report Form RPZ Reduced Pressure Zone Assembly](#)
- [Test and Maintenance Report Form DC Double Check Valve Assembly](#)

A copy of the test results, along with tester's current certification and liability insurance, must be submitted to Cranberry Township. Test forms are available by calling 724-776-4806 x1515

Select Language | ▼

Dedicated Irrigation Lawn Meters Cut Water Bills

by John A. Taylor • October 26, 2014



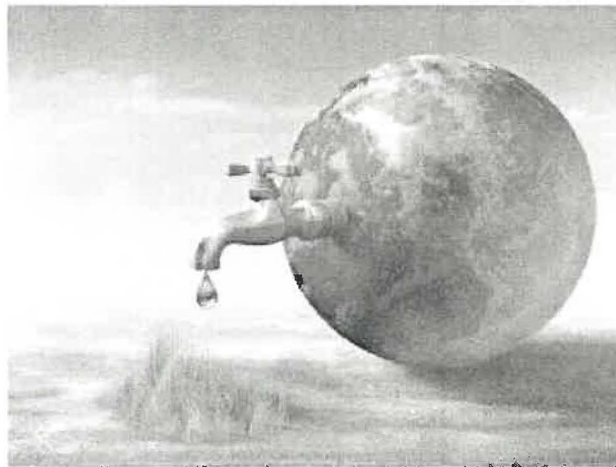
If your water bill is out of control then it's time to consider a dedicated irrigation meter.

Rising water bills have many Houston area home owners frustrated these days but what a lot of those home owners don't know is that there are a number of ways to significantly reduce that bill and a dedicated irrigation meter usually makes the biggest impact.

Irrigation accounts for between 50% and 70% of all the water we consume

in the U.S. and the money you spend on irrigation water in the summer months can be as high as 90% of your water bill in the Houston market. There are a number of steps you can take to reduce the consumption such as having an auditor run through your system, installing a rain sensor, upgrading to an ET based controller (waters based on soil moisture rather than a schedule), converting to more efficient watering devices (rotary nozzles on turf and drip emitters in beds) but adding a secondary irrigation meter may be the fastest way to cut that bloated water bill down to size.

Your water bill is usually divided into two parts; the water consumption and the sewer or waste water fee. Water usage is the part of the bill that most home owners think about when looking at the bottom line. This is how much water you actually used during any given month. The other half of the water bill is the sewer fee (sometimes called waste water) and this is the fee for the city (water purveyor) processing the water because all of that water goes down the drain and into the city sewer where it must be cared for. This sewer fee tends to be about 50% of your water bill.



Irrigation tends to be about 70% of the average size home's water consumption.

What your city or water purveyor may not be so quick to tell you is that irrigation water, which is the bulk of your water consumption, does not go

back into the sewer to get processed, it goes into the soil. Because of this, most cities, to include Houston, allow customers to have a secondary dedicated irrigation meter installed which is not subject to the sewer fee. For many Houston area home owners this could easily mean a \$60 to \$100 deduction from their water bill during the warmer months.



A secondary dedicated irrigation meter is set right next to your existing meter and can significantly reduce your water bill.

Here's how it works: The city will install a second irrigation meter right beside your existing meter, usually in the same box. It will then be connected to your irrigation system and the city will send you a separate bill each month for that meter. The water that passes through the irrigation meter will not be charged the sewer fee. While it is important to understand that this does not reduce your water

consumption, it can drastically reduce the amount of your monthly water bill. It also provides an accurate assessment of how much water your sprinkler system is using on a monthly basis.

It is also very important that you check with your water purveyor before moving forward with a project like this. Every water purveyor is different and how they credit the waste water or sewer portion of the bill can be very different from purveyor to purveyor. Some of the outlying areas charge a much smaller fee for waste water which can lead to a much smaller return on your investment. The cost of this second meter is usually pretty steep. Most of the Houston area can expect to spend between \$1,800.00 and \$3,000.00 for a meter like this with most of that money going to the city for permits, the meter itself and the city plumber (note that only a city plumber can install such a meter). The ROI for most Houston area home owners, that are in their homes long-term, more than justifies this up-front expense and many homeowners see a return in between one and two years.

When you are calling around for quotes it is very important to know what the contractor you are speaking to is quoting. Most contractors only perform a portion of the work because the entire process requires three licenses to complete (plumber, irrigator and backflow tester/inspector). One company or contractor may be turn-key and the next may leave the application and purchasing the meter to you. Others may take care of the plumbing portion but leave the irrigation work to you. TIS has partnered with COH plumbers to oversee the entire installation and to provide turn-key service. We fill out all of the necessary paperwork, pull the permits, coordinate the installation and connect the meter to your irrigation system once it has been installed so feel free to give us a call and find out how much you can save by having a

APPENDIX E
HARPETH VALLEY UTILITIES DISTRICT
SCHEDULE OF RATES, CHARGES AND
FEEES

IRRIGATION CUSTOMERS

DEFINITION - An irrigation customer is any metered connection intended for outdoor water use where the water used will not be introduced into the District's wastewater system.

MONTHLY CUSTOMER CHARGE - Each customer (i.e. each meter or customer account), shall pay a monthly customer charge of \$7.50 for water service plus monthly usage charges in accordance with the following rates based on the amount of water sold as determined by meter measurement.

| Water Metered | Water Rate Per 1000 gallons |
|----------------------|---------------------------------------|
| First 25,000 gallons | 3.83 |
| Next 25,000 gallons | 3.83 |
| Next 50,000 gallons | 3.83 |
| Next 100,000 gallons | 3.83 |
| Next 300,000 gallons | 3.83 |
| All Additional usage | 3.83 |

OTHER-

- (1) The above rates pertain to all net bills for water services. Late charges will be calculated by adding ten percent (10%) to the net bill.
- (2) A charge of thirty dollars (\$30.00) will be paid by each customer to initiate service.
- (3) A service charge of thirty dollars (\$30.00) will be made for each trip to the premises for the purpose of disconnection or reconnection for failure to pay the bill when due.
- (4) A thirty dollar (\$30.00) fee is to be charged for any check returned by a bank.



[About Holden](#) [Government](#) [Residents](#) [Businesses](#) [How Do I...](#)

[About Our Town](#) [Departments](#) [Permits](#) [Boards](#) [Inspections](#) [Commercial](#) [Online Services](#) [Forms](#) [E-Subscriber](#)
[2013 Light-A-Light Contributions](#) [Board of Assessors](#) [Do Something](#) [Questionnaire](#) [Employees Only](#) [Gale Free Library](#)
[Wachusett Food Pantry](#)

Links

[Department of Public Works](#)

[Licensed Drainlayers](#)

[List of Approved Materials for Water Infrastructure](#)

[Miscellaneous Water and Sewer Links](#)

[Sewer Connection Bulletin for Drainlayers](#)

[Sewer Fees and Charges](#)

[Sewer Meter Application](#)

[Sewer Meter Policy](#)

[State Certified Backflow Prevention Device Testers and Surveyors](#)

[Water / Sewer Regulations](#)

[Water / Sewer Utility Bill FAQ](#)

[Water Conservation Links](#)

[Water Fees and Regulations](#)

[Water Main Pressure Test Form](#)

[Water Quality Reports](#)

[Water Restriction notice](#)

[Water and Sewer Rates](#)

[Home](#) › [Water and Sewer Division](#) › [Sewer Meter Policy](#)

Sewer Meter Policy

[SHARE](#)

[Print](#)

[Send by email](#)

Sewer Meter Policy / Procedure

- 1) This policy replaces that dated June 21, 2004 and is in effect immediately. A copy of this policy and installation schematic shall be given or mailed to all persons inquiring about Sewer Meter Installation. The applicant shall complete the attached application (and Agreement if applicable) and return it along with full payment to the DPW Office at Town Hall, 1196 Main Street.
- 2) A reduce pressure zone backflow prevention device must be installed on any water line which services an irrigation system or swimming pool.
- 3) No credit on customers sewer bill shall be made until the subject Sewer Meter has been inspected, programmed and sealed by Holden Water-Sewer Division Personnel, nor until the required reduced pressure principal backflow prevention device has been installed, tested, and test results reported to Holden DPW.
- 4) Meters shall be inspected within five (5) business days of notification of installation. Water billing shall be notified of successful inspection of meter and backflow device by work card, and shall update billing system information within twenty-four (24) hours of work card submittal.
- 5) A fee for inspection, programming and sealing of the "sewer" meter shall be charged to the property owner in accordance with the fees as established by the Water Division of the Department of Public Works (see fee section of this policy).
- 6) In the event of any dispute concerning the dates of request or inspection, the application and work order cards shall be used as the sole indication of proceedings.
- 7) Customers unfamiliar with Sewer Meters are advised of the following:
 - a) Sewer Meters are standard water meters that measure some water NOT returned to the sewer.
 - b) All water must pass through ONE meter (the "Water" Meter). And only then branch through the "Sewer" Meter.
 - c) The Town reserves the right of future inspection, and any water found being returned to the sewerage system after passing through the Sewer Meter will result in immediate and permanent discontinuance of all sewer bill credits.
 - d) The Town will perform the initial inspection and test of the backflow prevention device for a fee as established by the Water Division of the Department of Public Works. (see fee section of this policy). The property owner is required by State Regulations to have this device tested semi-annually by a State Certified Backflow Device Tester and report the results to the DPW Water Division.
 - e) Only one (1) sewer meter shall be allowed to be installed per property. This meter is to be installed solely at the property owners expense.
 - f) Repair and maintenance of the "sewer" meter is the responsibility of the property owner. It is not the responsibility of the Town of placeCityHolden Water / Sewer Division to maintain, repair or replace sewer meters.

Contact Info

Address:

Town Hall
1196 Main Street
Holden, MA 01520

Phone:

(508) 210-5550 (Water Service)
(508) 210-5401 (Water Billing Questions)

Fax: (508) 829-0252

- g) The Water Division will not make adjustments to water / sewer bills for meters that are not working properly or that may be registering incorrectly.
- h) It is strongly suggested that the property owner periodically check the meter to see if it in fact is registering. This can be done by simply checking the reading on the meter before and after a use. This is suggested in order to avoid receiving no credit on a water / sewer bill for this meter.
- 8) USE OF SEWER METERS IS A PRIVILEGE AND NOT A RIGHT GRANTED UNDER TOWN WATER RULES. THE TOWN RESERVES THE RIGHT TO DISCONTINUE USE OF SEWER METERS AT ANY TIME.
- 9) Effective August 1, 2001 and permanently thereafter, all customers installing second meters in connection with irrigation systems shall have those system equipped with a rain sensor. Water personnel will inspect for the presence of a rain sensor prior to sealing and certifying the second meter, and prior to conducting the required backflow prevention device testing.
- 10) Rain sensors must continuously seek for the presence of rainfall and remain unobstructed in that process. Irrigation system controllers must be capable of receiving a signal from the rain sensor, processing that signal, and preventing irrigation systems from operating during rainfall and for a reasonable amount of time thereafter.
- 11) It is further recommended, but not required at this time, that irrigation system controllers be capable of programming so as to allow for watering only on odd numbered or even numbered days. Older style controllers are capable of setting for specific days of the week, but are not capable of continuous odd-even programming. This recommendation may become a requirement in the future, and may be applied retroactively to any irrigation system found operating contrary to water use restriction then in effect.
- 12) Persons desiring sewer meters for use only on existing house sillcocks do not need to install a reduced pressure backflow preventer if they agree to and sign the enclosed Agreement. They cannot use this agreement if they have - or if they intend to have - a pool or irrigation system.

Anyone refusing to sign this agreement has the choice not to have a second meter, or to install a reduced pressure principal valve before we seal and inspect the meter.

13) For cases where the above noted agreement has been signed, Water Sewer Division personnel will check each sillcock for installation of a non-removable hose bibb vacuum breaker at the time of meter inspection and sealing. All outdoor water lines not protected by an RPZ shall have non-removable hose bibb vacuum breakers installed.

FEES:

| | |
|---------------------------------------|--|
| 5/8" Water Meter | \$ 200.00 |
| 1" Water Meter | \$ 290.00 |
| Backflow Device Testing | \$ 70.00 |
| Inspect, Program and Seal Sewer Meter | \$ 50.00 |
| Sewer Meter Installation | Paid for by the Owner through individual contract with a licensed plumber. |

METER STYLE:

5/8" Bronze Base Meter (M25) or 1" Bronze Base Meter (M70) manufactured by Badger Meter Corporation. Meter must be equipped with an RTR register and Itron ERT so as to be compatible with the Town's radio read meter system.

QUESTIONS: Contact Holden Water Superintendent (508) 210-5550

Agreement for Installation of Second Water Meter (Sewer Meter)

The undersigned hereby acknowledges that a sewer meter is being installed at the premise located at _____ . In consideration for approval of the installation without the requirement for a backflow prevention valve, the undersigned agrees that the outdoor water use will be restricted to existing sillcocks (faucets) at the premises. In no case will the plumbing be extended, nor will water be used, for underground irrigation systems or swimming pools.

The undersigned further agrees that every sillcock at the premises shall be equipped with a non-removable hose bib vacuum breaker. Provision of all vacuum breakers shall be confirmed at the time of inspection of the sewer meter, and no credit on sewer charges shall be given until all such devices have been installed and inspected.

In the event that future use for underground irrigation system or swimming pool purposes is desired, the undersigned agrees to have installed a reduced pressure principal backflow prevention device, in accordance with all provisions of 310 CMR 22.22, at the owner(s) expense. If water is used at any time for irrigation or swimming pool purposes without the installation of a reduced pressure principal backflow prevention device, the undersigned further agrees that the sewer meter shall be permanently removed and no further credit of sewer charges for outdoor water use shall be given, and that such use constitutes a violation of the Drinking Water Regulations of Massachusetts given at 310 CMR 22.22.

I hereby agree to all conditions stated above:

Signature and date

Print Name

Town of Holden, 1204 Main Street, Holden, MA 01520 (508) 210-5500
[Login](#) [Employee Directory](#) [Disclaimer](#) [Virtual Towns & Schools](#)

Submeter Information

James City County residents served by the James City Service Authority (JCSA) sewer system can obtain credit on the sewer and wastewater treatment portion of your Hampton Roads Utility Billing Service (HRUBS) statement by registering either the submeter attached to your lawn irrigation system, or by registering a hose bibb meter that attaches to your outside spigot.

Water is not included in the credit. Hose bibb meters are not accepted by the Hampton Roads Sanitation District (HRSD) for wastewater treatment credit. There is an \$18.00 a year submeter fee.

► Forms

- [Submeter Registration](#)
- [Enter Reading of Customer Owned Meter](#)

► Frequently Asked Questions

How do you obtain a submeter?

Irrigation or Landscape companies who install lawn irrigation systems, or if you choose the hose bibb meter, you can find this information online by using search engines such as [Google](#), [Bing](#), [Yahoo](#), or others* or by contacting a company who handles water meters.

**The JCSA does not endorse specific online search engines. These sites have not been reviewed by the JCSA for content, so use at your own risk.*

When should you register your submeter? As soon as the submeter is installed by the company putting in your lawn irrigation system, or when you receive the hose bibb meter from the manufacturer.

How do you read a submeter? Pictured are examples of typical submeters which measure in gallons and cubic feet. The dial looks like the odometer in your car. A gallon submeter has six dials that change, the final two of which have a black background, followed by a stationary zero; the zero should be included in your reading. **A cubic foot meter has no stationary zero.** No numbers other than those on the dial itself should be included in your reading. Hose bibb meters measure in gallons, but have no stationary zero.

What happens if a submeter reading is submitted late? Should a reading be received late, the credit will be delayed until the next billing cycle. Submeter deductions given for any one billing cycle cannot exceed the total water consumption for that billing period. No back credit will be given.

How does your submeter credit appear on the bill? Sewer Service is based on your Water Usage. Your submeter reading is shown in the table under the Sewer section of your HRUBS bill and deducted from your Sewer Service.



Gallon submeter



Cubic foot submeter